

**Continental**   
The Future in Motion



**Connect your tires.**  
Benefits of digital tire monitoring.



## Downtimes Are a real blowout.

Digital tire monitoring will make your vehicles more profitable and safe. Tire failure and blowouts are among the most frequent breakdown causes for commercial vehicles. Trouble often starts with creeping loss of air pressure, and if the problem goes unnoticed a blowout occurs. So, if you want to keep your business moving, keep your tires rolling.

ContiPressureCheck™ and ContiConnect™ will provide you with accurate tire status information – and help prevent unscheduled downtimes.

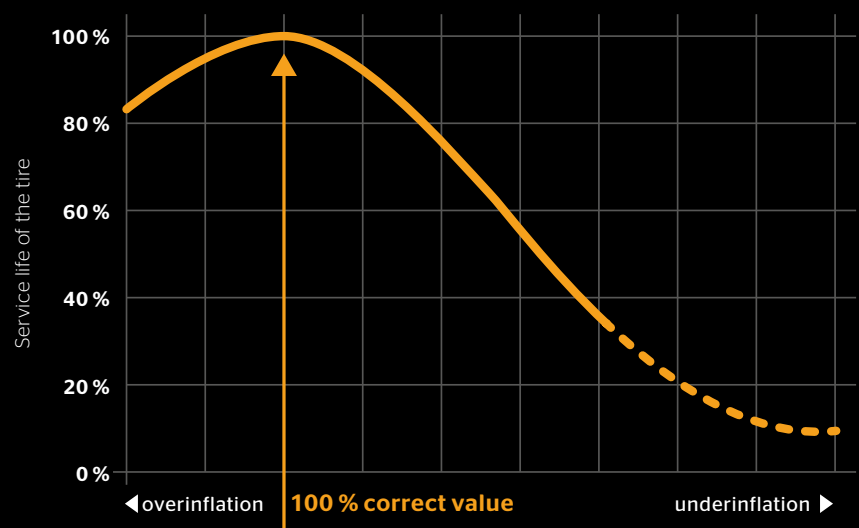
### **Low pressure causes low lifetime**

The digital monitoring leads to better cost efficiency. The optimum tire pressure saves fuel and energy, enhances tire life and thus reduces replacements costs for an improved total cost of ownership.



**Effects on a tire when operating at incorrect inflation.**

- › Based on a 18.00-33 dimension a reduction of service life of 8 % would be the result when running the tire at 10 % below recommended tire pressure.
- › Costs of under inflation = Tire price x 8 %
- › This indicates that only 92 % of the designated life is used.
- › Consequently, you will have much higher expenses for tires, not including the fitment and service costs.





## ContiPressureCheck™ Single Vehicle Monitoring

ContiPressureCheck™ provides drivers with precise status information by continually monitoring air pressure and temperature via the tire sensor. The system displays data in the drivers cab and warns before a condition becomes critical. ContiPressureCheck™ is a complete, driver focused system for single vehicles and can be integrated into third party telematics solutions.



**ContiPressureCheck™ Light**  
The Hand-Held tool can read air pressure and temperature from the tire sensor.



## ContiConnect™

### Multiple Vehicle Solution

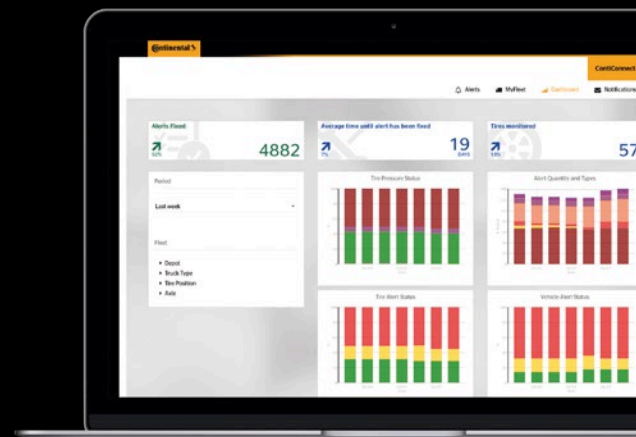
ContiConnect™ takes digital tire monitoring to the next level. The solution conveniently connects multiple vehicles and helps fleet managers switch from inflexible manual service routines to targeted in-time maintenance. Tire issues are immediately identified upon return to the fleet yard or in real-time with any telemetry provider.

**ContiConnect™ Light** is the ideal entry level solution for drivers. It displays tire pressure and temperature via the Hand-Held tool, while allowing manual data upload later on to the ContiConnect™ web portal.

**ContiConnect™ Yard** receives all tire data whenever your trucks return to the yard. The yard reader station wirelessly picks up the sensor data and transmits it to the ContiConnect™ web portal via cellular network.

**ContiConnect™ Live** provides real time online integration with the web portal and is compatible with multiple telematics providers/devices.

**ContiConnect™ web portal** allows fleet managers to conveniently access low pressure alerts, track data over time or view detailed reports and analytics. If low tire pressure or high temperatures are detected, you will receive an alert in order to proactively fix the problem.



# ContiConnect™

## Your everywhere fleet assist



Ensures correct  
tire inflation

**Benefit:**  
**Driving safety**



Optimizes  
vehicle handling

**Benefit:**  
**Driving safety**



Maximizes  
fuel efficiency

**Benefit:**  
**Fuel cost saving**



Achieves  
optimum tire life

**Benefit:**  
**Tire cost saving**

stant.



Minimizes CO<sub>2</sub> emissions

**Benefit:**  
Environmental protection



Ensures uptime

**Benefit:**  
Fleet utilization increase



Optimizes fleet management

**Benefit:**  
Improved productivity



Reduces problems

**Benefit:**  
Peace of mind

# Modular makes sense.

Make your choice.

		ContiPressureCheck™ Single Vehicles		ContiConnect™ Multiple Vehicles		
		Single	Integrated	Light	Yard	Live (planned)
Components	1 ContiPressureCheck™ display	■				
	In-vehicle telematics integration - proprietary		■			■
	In-vehicle telematics integration - Android app		■			■
	2 ContiConnect™ web portal			■	■	■
	Third-party platform integration		■		■	■
3 Additional Receiver						
Connectivity	4 Hand-held tool*	■	■	■	■	■
	5 Central control unit	■	■			■
	6 Yard reader station				■	
	Telematics box		■			■
	Bluetooth dongle		■			■
	Cables	■	■			■
Tires & sensors	7 Tire sensor	■	■	■	■	■

\*ContiPressureCheck™ Light with Hand-held tool plus sensor

■ necessary hardware components

■ optional components





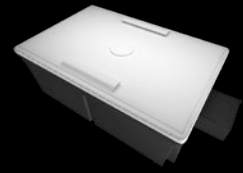
### 1 Display in the driver's cockpit

- › Display shows the status of the tire and indicates 7 different types of warnings and the related tire position in the driver's cabin



### 2 ContiConnect™ Web Portal

- › Browser-based web interface for access to data, statistics and reports.



### 3 Additional Receiver

- › Integrated antenna and receiver to be used if:
  - › Vehicle has an axle spread of more than 6m
  - › Vehicle has more than 3 axles
  - › A trailer is docked



### 4 Hand-Held tool

- › Initial configuration of entire system
- › Wireless communication with tire sensors
- › Synchronizes tire sensors to each wheel position
- › Wired communication with CCU



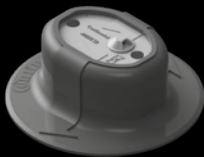
### 5 Receiver / Central Control Unit (CCU)

- › Receives and evaluates signals from tire sensors
- › Generates warnings and provides them for display - Up to 24 tires fitted on up to 6 axles



### 6 Yard Reader Station

- › The connectivity component that receives data wirelessly from the tire sensor upon returning to the yard.



### 7 Tire Sensor

- › Integrated tire sensor with radio frequency transmitter - individual coding per running wheel



### 8 Cleaning Scraper & Mounting Tool

- › Scraper for pretreating the inner layer of the tyre
- › Pressing tool including insert
- › Tool for pressing on the tire sensor during bonding



### 9 Partner Case

- › Partner case, pressing tool, pressing tool insert (2x), insertion tool for tire sensor (not in the picture), cleaning scraper, tire sensor container (12x), KIT 4.2.1 (2x), adhesive 1.6g (2x), spatula (2x)
- › Optional content: Hand-held tool set, liquid buffer (REMA TipTop), crimping pliers, cable stripper

# ContiPressureCheck™

## Required Kits per Vehicle

### Material Handling

### Earth Moving



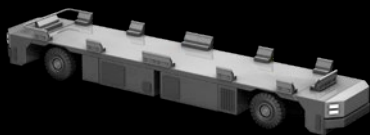
Tractor		
●	1x Kit 1.2	Without additional receiver
●	1x Kit 4.2.6	6 tire sensors
●	1x Kit 6.2	TireView (Display)



Reach Stacker		
●	1x Kit 5.2	Coach
●	1x Kit 4.2.6	6 tire sensors
●	1x Kit 6.2	TireView (Display)



Loader		
●	1x Kit 2.2	With additional receiver
●	1x Kit 4.2.6	6 tire sensors
●	1x Kit 6.2	TireView (Display)



AGV		
●	1x Kit 2.2	With additional receiver
●	1x Kit 4.2.4	4 Tire Sensors
●	1x Kit 7.2	TireConnect



Pushback		
●	1x Kit 2.2	With additional receiver
●	1x Kit 4.2.4	4 tire sensors
●	1x Kit 6.2	TireView (Display)



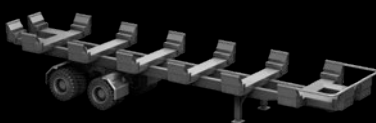
Dumper (ADT & RDT)		
●	1x Kit 5.2	Coach
●	1x Kit 4.2.6	6 tire sensors
●	1x Kit 6.2	TireView (Display)



Straddle Carrier*		
●	1x Kit 5.2	Coach
●	2x Kit 4.2.4	4 Tire Sensors
●	1x Kit 6.2	TireView (Display)



Heavy Forklift, Empty Container Handler		
●	1x Kit 2.2	With additional receiver
●	1x Kit 4.2.6	6 tire sensors
●	1x Kit 6.2	TireView (Display)



Trailer*		
●	1x Kit 3.2	Trailer
●	2x Kit 4.2.4	4 Tire Sensors

\* Please get in contact with our sales team for detailed information about these and further industrial vehicles. Please always check the Continental mounting manual

- Basic Kits
- Sensor Kits
- Advanced Kits

# Kits

	Description	Article No.
● <b>Basic Kits</b>	Kit 1.2: without additional receiver	17 34 115
	Kit 2.2: with additional receiver	17 34 116
	Kit 3.2: Trailer	17 34 117
	Kit 5.2: Coach	17 34 120
● <b>Sensor Kits</b>	Kit 4.2.2: 2 tire sensors	17 34 124
	Kit 4.2.4: 4 tire sensors	17 34 118
	Kit 4.2.6: 6 tire sensors	17 34 119
● <b>Advanced Kits</b>	Kit 6.2: TireView (Display)	17 34 121
	Kit 7.2: TireConnect (Telematics cable)	17 34 122
	Kit 8.2: TisWeb® Starter Kit Tire	17 34 125
<b>Tire Sensor mounting &amp; spare parts</b>	Cleaning Scraper	17 34 130
	Mounting tool (tire sensor)	17 34 019
	Insert - Mounting Tool	17 34 022
	Set Tire Sensor Container 12	17 34 072
	Set Tire Sensor Container 24	17 34 073
	Spatula	17 34 021
	Glue CB2250 1,6g	17 34 113
	Glue CB2250 4,8g	17 34 112
	Glue CB2250 9,6g	17 34 020
	Set Sticker and Valve cap 2	17 34 123
	Set Sticker and Valve cap 4	17 34 114
	Set Sticker and Valve cap 6	17 34 088
	<b>System configuration &amp; spare parts</b>	Set Handheld tool incl. accessory
Handheld tool		17 34 128
Diagnosis cable (handheld tool)		17 34 024
Repl. Fuse Diag cable		17 34 059
Charger (handheld tool)		17 34 053
USB cable (handheld tool)		17 34 054
<b>Spare parts - System</b>	Set Central control unit Truck/Bus	17 34 060
	Bracket (central control unit)	17 34 003
	Set Central control unit Trailer	17 34 061
	Additional receiver + Impact protection	17 34 056
	Impact protection (add. receiver)	17 34 055
	Bracket (additional receiver)	17 34 002
	Sub-harness A	17 34 008
	Sub-harness B	17 34 007
	Sub-harness C	17 34 006
	Sub-harness D	17 34 009
	Sub-harness D - large (13 metres)	17 34 067
	Sub-harness E	17 34 087
	Harness F+G	17 34 016
	Sub-harness H	17 34 017
	Sub-harness K	17 34 070
	Sub-harness L	17 34 069
	Display	17 34 011
	Display holder	17 34 012
	Display holder dashboard	17 34 071
	Pressure Check Indicator	17 34 013
	Fuse Kit F	17 34 036
	Connector Kit A+B+C	17 34 018
	<b>Partner Case</b>	Partner Case
KIT CPC Partner Case		17 34 135
Kit CPC Training Box		17 34 131
<b>ContiConnect</b>	KIT YardReader Station	*

\*Please refer to your sales contact for more information.

**Continental Reifen Deutschland GmbH**

Büttnerstraße 25

D-30165 Hannover

T. +49 511 938-01

mail\_service@conti.de

www.continental-specialty-tires.com