



# Delivering more miles, more efficiently.

Continental Solid Tyres



Solid tyres with a leading edge	03
The Continental Plus Compound	04
SC20+	06
CS20+	08
SH12+	10
CSEasy SC20+	12
SC11, CSE-Robust, Continental LifeCycle™	14
MH20, MC20 & ContiPT18	15
Clean tyres (Non Marking)	16
Anitstatic tyres	17
Dimensions	18
Environment	22

## Solid tyres with a leading edge

More than 145 years of experience and worldwide production capability make Continental a leading tyre manufacturer. Our range comprises a wide spectrum of premium-quality products for almost every form of mobility, from feather light racing tyres to the heaviest specialist tyres for the most extreme conditions.

Thanks to more than 50 years of experience, one field in which we have particular expertise is the solid tyre segment. Many ideas originating from our development division have revolutionised the market. For example the Snap-In-Tyre system (SIT) has now become standard in the industry.

Representing 30% of sales, Continental is much more than a tyre manufacturer. We see ourselves not just as a tyre specialist, but also an expert in driving dynamics. The orientation of our customers provides the key motivation for the production of diagonal, radial, V.ply and solid-rubber tyres. This enables us to offer each customer exactly the right tyre to meet their specific requirements.

An example of this is our new solid tyre line: the Plus series. These are based on a specially developed compound technology that facilitates application on smooth warehouse floors as well as abrasive outdoor surfaces. The focus of development was to achieve high mileage and excellent cut protection, whilst minimising rolling resistance.

Whatever the requirement you will find the appropriate Continental solid tyre for all applications on the following pages.

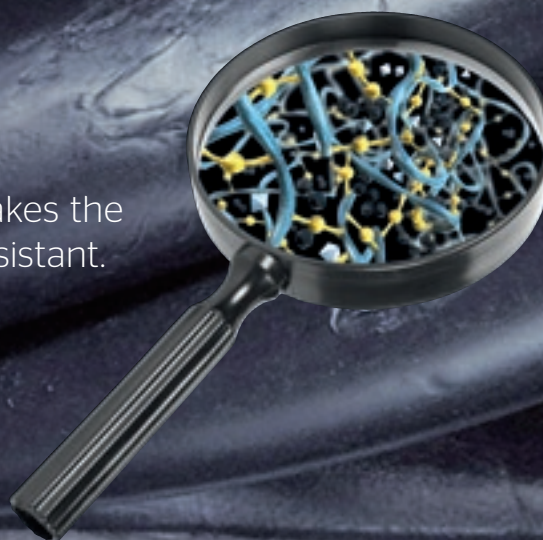
# Continental Plus Compound. The superior technology of the new Continental Solid Tyre Range.

Shorter cycle times and increased cost pressures, coupled with new environmental and safety regulations - conditions are becoming more complex year upon year. Our new solid tyres have been developed as a response to these.

Our engineers focused on two crucial criteria throughout the development process: extended service life whilst simultaneously achieving lower rolling resistance. These requirements were successfully realised in one tyre technology using a selection of high-quality raw materials and a complex finishing process. The Continental Plus Compound.



Improved mileage thanks to the  
new Continental Plus Compound



Silica helps prevent cracks and makes the  
compound even more damage resistant.

**Continental Plus Compound.  
The solid tyre compound for the 21st century**

The rubber compound utilised is the critical factor in assessing the quality of solid tyres. Our aim was to generate a polymer-matrix using the maximum number of short-chained sulphur compounds. The sulphur serves as an adhesive between polymer chains and makes the rubber both robust and elastic. In this matrix, stabilising firm components and silica are embedded to reduce wear and prevent cracks. The result is a more durable, cut resistant rubber compound. At the same time, the stability of this rubber compound ensures the tyres crack less, minimising both temperature build up and rolling resistance.

**Raw materials of the highest quality**

Natural rubber remains the main component in our new compound, as it exhibits a host of crucial properties that no synthetic product can offer. As with all natural products, quality is subject to fluctuations influenced by factors such as climate, harvest, cultivation methods

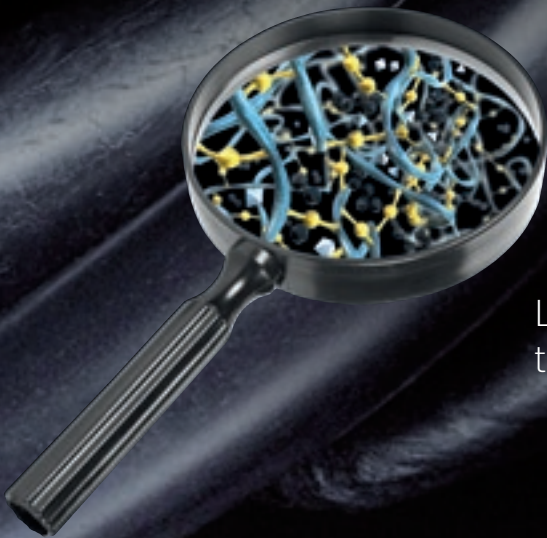
and processing techniques. Thanks to decades of experience, close relationships with suppliers of raw materials and large procurement volumes, we are in a position to access the finest materials available.

**Optimised vulcanisation procedure**

Vulcanisation is the process through which raw materials are transformed into tyres. Even in a tyre weighing several hundred kilos, minor temperature fluctuations in processing can have an adverse effect on the final quality of the product.

That is why we tailored the vulcanisation process specifically to the requirements of solid tyres. In addition to the targeted mixing of raw materials, precise temperature management throughout the entire production process includes article specific heating times, which positively impacts the rolling resistance of the finished tyre.

This unique system ensures every product is manufactured to meet our quality requirements.



Lower heat development in the  
tyre increases energy efficiency

The new range of Continental solid tyres offer superior mileage\*, are outstandingly robust and at the same time extremely energy efficient

# SC20+

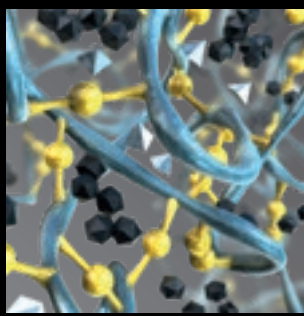
Due to its high level of resilience, the new SC20+ offers enhanced mileage performance and is available in a wide range of sizes suitable for virtually all applications. Its unique profile design is based on the special combination of linear grooves and large blocks.

Multiple grip edges enable excellent traction on almost any surface. Due to exceptional cut resistance, the Continental Plus Compound not only delivers superb reliability, but also enables a very low rolling resistance thanks to its low heat development and thus excellent energy efficiency.

The SC20+ is the universal tyre for indoor and outdoor applications on virtually all surfaces.

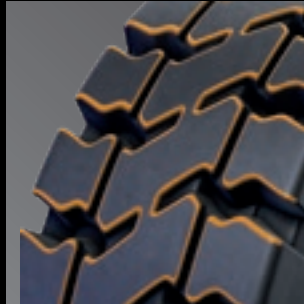


- The SC20+ combines outstanding mileage with optimal energy efficiency



**Exceptional mileage with optimal energy efficiency**

Superior abrasion behaviour thanks to the Continental Plus Compound with up to 20% higher mileage\* on severe, abrasive surfaces whilst still achieving low rolling resistance



**Excellent traction**

Tried and tested profile with large, individual profile blocks and pronounced linear grooves deliver excellent traction



**High durability**

Enhanced compound thanks to short-chained sulphur components  
Optimised silica portion for maximum resistance against cracking



\*compared to SC20 Energy+



# CS20+

The CS20 has always been an extraordinary solid tyre. By means of the new Continental Plus Compound, it becomes even better in the shape of CS20+. Its unique double-L profile with closed shoulders ensures not only exceptionally precise steering and cornering, but also minimises vibration, resulting in excellent driving comfort.

With the introduction of the new Continental Plus Compound the CS20+ delivers up to 20% improved mileage\* performance as well increased resistance to cut and chip damage. Rolling resistance values are maintained, ensuring leading performance in energy efficiency and thermal endurance.

The CS20+ is an agile tyre for use on smooth, severe surfaces.



- High comfort due to significantly reduced vibration
- Enhanced mileage and durability compared to the CS20

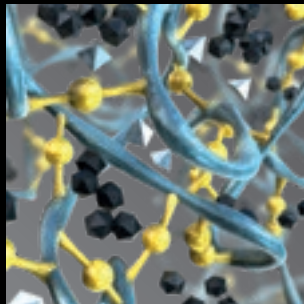




**Maximum steering precision**  
The closed shoulder design allows a fast and direct steering response



**Excellent cornering stability**  
A wide shoulder rib instead of individual tread blocks ensures continuous contact between tyre and ground surface, therefore preventing vibration and noise development for a smooth ride and overall driver comfort.



**Exceptional mileage**  
Up to 20% more mileage\* on severe abrasive ground/floor surfaces and increased damage resistance  
  
Outstanding endurance thanks to the Continental Plus Compound

\*compared to predecessor



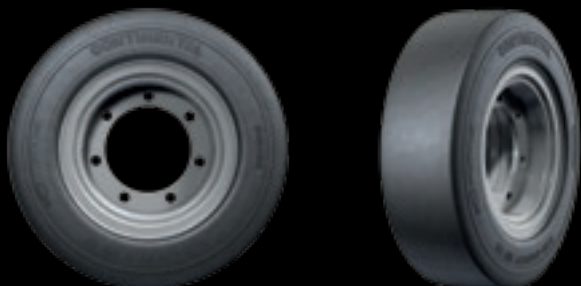


# SH12+

The SH12+ impresses with its slick profile, closed shoulders, maximum contact area and the Continental Plus Compound. It offers excellent driving comfort through its smooth ride with low vibration, exceptional mileage and great protection against damage.

The Continental Plus Compound is extremely effective at minimising heat development within the tyre. In addition to improved resilience, the rolling resistance and associated energy consumption of the SH12+ is reassuringly low.

The SH12+ is a specialised slick tyre primarily for indoor use on severe and smooth surfaces.



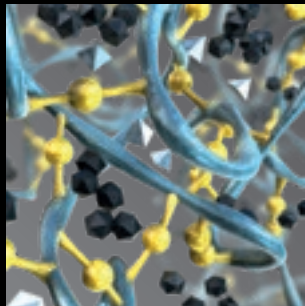
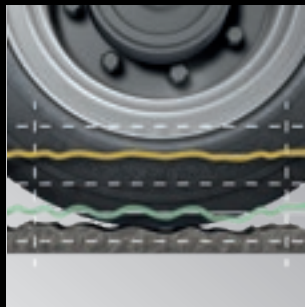
- The problem solver for special applications
- Even more resistant compared to its predecessor SH12



**Excellent driving comfort**  
Low vibration resulting from slick design enable exceptionally smooth performance

**Strong damage resistance**  
Slick design leads to increased damage resistance and excellent reliability due to less tread edges when compared to a profiled pattern

**Exceptional mileage**  
Up to 20% higher mileage\* on severe, abrasive surfaces



\*compared to predecessor

# CSEasy SC20+

With a unique mounting function, the CSEasy SC20+ offers unique benefits that remove the requirement for mounting presses and external services. This is achieved using the CSEasy adaptor which can simply be loosened with an Allen key. Compared to conventional solid tyres, the adaptor ensures a significantly more secure rim seating and simultaneously prevents tyres from twisting on the rim.

Another advantage of the brilliant adaptor is that the CSEasy SC20+ tyre heats up significantly less. Even under the toughest stresses, the tyre remains measurably cooler and is therefore, notably more durable when compared to conventional solid tyres.

Two advantages impress:

1. Combined with the unique adaptor system, the new Continental Plus Compound lends the CSEasy SC20+ the highest level of resilience against all types of damage, low abrasion for excellent durability and reduced rolling resistance for outstanding energy efficiency.
2. When a tyre change is required, downtime is reduced to a minimum.

The CSEasy SC20+ is the nearly indestructible tyre on all surfaces, both for indoor and outdoor applications.



- Adaptor system for easy installation
- Up to 20% more mileage compared to the predecessor CSEasy SC20



#### User friendly

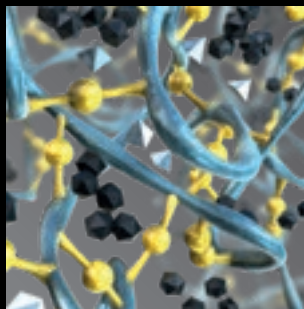
Quick tyre changes as a result of independence from external mounting services and thus minimal downtime

#### Exceptional durability

The Continental Plus Compound combined with the CSEasy adaptor guarantees low heat development within the tyre interior, and thus a high mileage

#### Energy efficient

Low heat development in the tyre interior also results in impressively low rolling resistance





# Super Elastics

## SC11



The SC11 impresses with its closed cap providing not only great driving stability but also exceptionally high mileage with low rolling resistance.

In addition, its design guarantees extraordinarily precise steering and cornering characteristics.

### Product properties

- High mileage
- Low vibrations
- Superb driving comfort
- High driving stability
- Excellent transmission of lateral forces

## CSE-Robust



Compact, robust, versatile. The ideal tyre for use on small tractors and trailers.

Despite its small dimensions, the CSE Robust offers everything you expect of a Continental solid tyre: exceptional protection against damage from cuts and punctures, great mileage and low rolling resistance.

### Product properties

- Good traction
- High cornering stability
- Great safety for small tractors and trailers

## Continental LifeCycle™



There are things that are too valuable to dispose of. These include Continental solid tyres. In order to enable a second life for these premium quality tyres, we developed Continental Lifecycle™:

An intelligent combination of high quality, low price and a significant contribution to our environmental footprint.

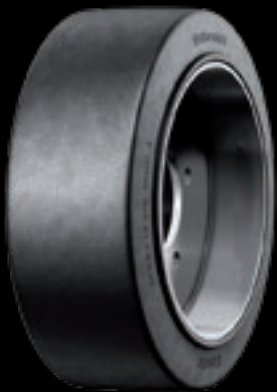
### Product properties

- Environmentally friendly and affordable
- Saves raw materials and energy during production
- Low priced alternative without sacrificing quality
- Especially suited for light to medium loads



## Press On Bands

### MH20



By means of a structure specifically attuned to bearing loads, the MH20 enables the transport of heavy loads with small wheel sizes.

This makes it the first choice for vehicles operating in height restricted areas.

Furthermore, the rubber compound guarantees a high mileage, whilst at the same time provides excellent cut protection with very low rolling resistance.

#### Product properties

- High load bearing capability
- High mileage
- Robust construction
- High tilt stability
- Low rolling resistance

### MC20



The MC20 builds on the MH20. The key difference is the massive profile blocks that deliver a great level of traction. Furthermore, the rubber compound guarantees high mileage performance, whilst at the same time excellent cut protection with low rolling resistance.

This is the tyre for transporting heavy loads across a wide range of surfaces. Thanks to its compact design, low ceilings and clearing heights are no problem.

#### Product properties

- High tilt stability
- High load bearing capability
- Low rolling resistance
- Robust construction
- Excellent traction

### ContiPT18



The ContiPT18 transmits high drive forces similar to a super elastic tyre and combines these with the load capacity of press on bands.

In addition to excellent traction its special profile also achieves increased mileage performance and superb cut protection, whilst simultaneously delivering low rolling resistance.

#### Product properties

- High tilt stability
- High load bearing capability
- Low rolling resistance
- Robust construction
- Exceptional traction
- Excellent transmission of lateral forces



# Clean Tyres (Non-marking)



Our clean tyres have been developed for areas that are sensitive to dust and dirt. These can be recognised at first glance thanks to their characteristically light coloured rubber compound. They reduce visible tyre marks on the floor and thus avoid contamination of production and storage areas.

### Frequent application areas

- › Automotive industry
- › Food and beverage
- › Computer and electronics
- › Paper
- › Solar industry
- › Optical and opto-electronic industry
- › Chemicals and pharmaceuticals
- › Aviation and aeronautics

The following products are available as a clean version:

### Super Elastic Tyres

- SC20
- CS20
- CSEasy
- SH12
- SC11
- CSERobust

### Press on Bands

- MH20
- MC20
- ContiPT18



## Antistatic Tyres



Every vehicle generates and stores electronic charge whilst driving as conventional tyres are practically non-conductive. normally this is not a problem, yet in certain sensitive application areas, uncontrolled electronic discharges may cause sparks. That is why we have developed antistatic versions of our Super Elastic Tyres SC20 and MH20, which prevent static charging.

### Frequent application areas

- › Computer & electronics
- › Solar industry
- › Optical & opto-electronic industry
- › Chemicals and pharmaceuticals
- › Oil & gas industry
- › Aviation and aeronautic industry

The following products are available as an antistatic version:

#### Super Elastic Tyres

SC20

#### Press on Bands

MH20

# Dimensions

## Super Elastics

Dimension	Wheel type	SC20+	CS20+	CSEasy SC20+	SH12+	CSE-Robust	SC10	SC11	SC15	LifeCycle
<b>4"</b>										
3.00 - 4	M	○	○	○	○	●	○	○	○	○
4.00 - 4	M	○	○	○	○	○	●	○	○	○
<b>6"</b>										
140/55-6 /4.50	M/S	○	○	○	○	○	○	○	●	○
<b>8"</b>										
125/75 - 8/3.00	15X4 1/2-8	S	●	○	●	○	○	○	●	○
		SIT	●	●	○	●	○	○	●	○
15 X 4 1/2 - 8	S	○	○	○	○	○	○	○	●	○
	SIT	○	○	○	○	○	○	○	●	○
150/75 - 8/4.33	16X6-8	S	●	○	●	○	○	○	○	○
		SIT	●	●	○	○	○	○	○	●
180/70 - 8/4.33	S	○	○	○	●	○	○	○	○	○
	SIT	○	○	○	●	○	○	○	○	○
180/70 - 8/4.33	18X7-8	S	●	○	●	○	○	○	○	○
		SIT	●	●	○	○	○	○	○	●
4.00 - 8/3.00	S	●	○	○	○	○	○	○	○	○
	SIT	●	●	○	○	○	○	○	○	○
5.00 - 8/3.00	S	●	○	●	○	○	○	○	○	●
	SIT	●	○	○	○	○	○	○	○	●
<b>9"</b>										
140/55 - 9/4.00	SIT	●	●	○	○	○	○	○	●	○
200/75 - 9/6.00	21X8-9	S	●	○	●	○	○	○	○	○
		SIT	●	○	○	○	○	○	●	○
6.00 - 9/4.00	S	●	○	●	○	○	○	○	○	●
	SIT	●	●	○	○	○	○	○	○	●
<b>10"</b>										
180/60 - 10/5.00	S	○	○	●	○	○	○	○	○	○
	SIT	●	●	○	●	○	○	○	○	○
200/50 - 10/6.50	S	○	○	●	○	○	○	○	○	○
	SIT	●	●	○	●	○	○	○	○	●
225/75 - 10/6.50	23X9-10	S	●	○	●	○	○	○	○	○
		SIT	●	●	○	○	○	○	○	●
6.50 - 10/5.00	S	●	○	●	○	○	○	○	○	●
	SIT	●	●	○	○	○	○	○	○	●
<b>12"</b>										
250/60 - 12/8.00	23X10-12	S	○	○	●	○	○	○	○	○
		SIT	●	●	○	○	○	○	○	●
250/75 - 12/8.00	27X10-12	S	●	○	●	○	○	○	○	○
		SIT	●	●	○	○	○	○	○	●
315/45 - 12/10.00	SIT	●	●	○	○	○	○	○	○	
7.00 - 12/5.00	S	●	○	●	○	○	○	○	○	●
	SIT	●	●	○	○	○	○	○	○	●

- Available
- Unavailable

Various dimensions are also available in clean and antistatic versions.  
Your sales representative will be happy to advise you.



# Dimensions

## Press on Bands

Dimension	Wheel type	MH20	MC20	
<b>65mm</b>				
105/45 - 65	Z	●	○	
<b>75mm</b>				
125/50 - 75	KM15	●	○	
	Z	●	○	
<b>100mm</b>				
150/50 - 100	KM15	●	○	
	Z	●	○	
160/50 - 100	KM15	●	○	
	Z	●	○	
170/75 - 100	Z	●	●	
200/75 - 100	KM15	●	○	
	Z	●	○	
<b>105mm</b>				
200/85 - 105	KM15	●	○	
	Z	●	○	
<b>120mm</b>				
180/50 - 120	KM15	●	○	
	STB	●	○	
	Z	●	○	
230/75 - 120	Z	●	○	
<b>140mm</b>				
200/50 - 140	KM15	●	○	
	STB	●	○	
	Z	●	○	
250/75 - 140	KM15	●	○	
	STB	●	○	
	Z	●	○	
250/100 - 140	Z	●	○	
250/130 - 140	STB	●	○	
	Z	●	○	
<b>150mm</b>				
200/60 - 150	Z	●	○	
<b>160mm</b>				
265/160 - 160	STB	●	○	
	Z	●	○	
<b>165mm</b>				
254/102 - 165	10X4X6 1/2	STB	●	○
254/127 - 165	10X5X6 1/2	STB	●	○
267/127 - 165	10 1/2X5X6 1/2	STB	●	○
<b>170mm</b>				
230/50 - 170	KM15	●	○	
	STB	●	○	
	Z	●	○	
230/75 - 170	STB	●	○	
250/105 - 170	STB	●	○	
250/60 - 170	KM15	●	○	
	Z	●	○	

Dimension	Wheel type	MH20	MC20	ContiPT18
250/75 - 170	Z	●	○	○
250/80 - 170	STB	●	○	○
	Z	●	○	○
260/60 - 170	KM15	●	○	○
	Z	●	○	○
270/105 - 170	Z	●	○	○
280/75 - 170	KM15	●	○	○
	Z	●	○	○
300/85 - 170	Z	●	○	○
310/100 - 170	Z	●	○	○
<b>190mm</b>				
250/50 - 190	KM15	●	○	○
	Z	●	○	○
250/60 - 190	STB	●	○	○
	Z	●	○	○
250/85 - 190	STB	●	○	○
280/60 - 190	STB	●	○	○
	Z	●	○	○
<b>200mm</b>				
310/75 - 200	KM15	●	○	○
310/120 - 200	KS15/6	●	○	○
310/140 - 200	KS15/6	●	○	○
<b>203mm</b>				
300/90 - 203	Z	●	○	○
300/100 - 203	KM8	●	○	○
	STB	●	○	○
	Z	●	○	○
305/114 - 203	12X4 1/2X8	STB	●	○
330/114 - 203	13X4 1/2X8	STB	●	○
330/127 - 203	13X5X8	STB	○	●
343/140 - 203	13 1/2X5 1/2X8	KS15/6	●	○
	STB	●	●	○
356/114 - 203	14X4 1/2X8	STB	●	●
<b>220mm</b>				
280/50 - 220	STB	●	○	○
	Z	●	○	○
280/75 - 220	KM10	●	○	○
	Z	●	○	○
285/75 - 220	STB	●	○	○
300/50 - 220	KM15	●	○	○
300/75 - 220	KM10	●	○	○
	Z	●	○	○
310/60 - 220	Z	●	○	○
310/120 - 220	Z	●	○	○
<b>254mm</b>				
356/127 - 254	14X5X10	STB	●	○
394/152 - 254	15 1/2X6X10	STB	○	●
<b>267mm</b>				
406/127 - 267	16X5X10 1/2	KS15/6	●	○
	STB	●	●	●
406/152 - 267	16X6X10 1/2	KS15/6	●	○
	STB	●	●	●
406/178 - 267	16X7X10 1/2	KS15/6	●	○
	STB	●	○	○

Dimension	Wheel type	MH20	MC20	ContiPT18	
<b>270mm</b>					
360/60 - 270	KM15	●	○	○	
	STB	●	○	○	
	Z	●	○	○	
360/75 - 270	KM15	●	○	○	
	Z	●	○	○	
360/85 - 270	KM15	●	○	○	
	STB	●	○	○	
	Z	●	○	○	
<b>286mm</b>					
381/127 - 286	15X5X11 1/4	STB	●	●	○
413/127 - 286	16 1/4X5X11 1/4	STB	●	●	○
413/152 - 286	16 1/4X6X11 1/4	STB	●	●	●
413/178 - 286	16 1/4X7X11 1/4	STB	●	●	○
<b>300mm</b>					
450/120 - 300	STB	●	○	○	
<b>305mm</b>					
400/65 - 305	Z	●	○	○	
400/75 - 305	KM15	●	○	○	
	Z	●	○	○	
405/65 - 305	STB	●	○	○	
405/130 - 305	STB	●	○	○	
	Z	●	○	○	
405/260 - 305	STB	●	○	○	
415/75 - 305	STB	●	○	○	
415/90 - 305	STB	●	○	○	
	Z	●	○	○	
415/100 - 305	KM8	●	○	○	
	STB	●	○	○	
	Z	●	○	○	
425/150 - 305	STB	●	○	○	
	Z	●	○	○	
425/260 - 305	STB	●	○	○	
425/300 - 305	STB	●	○	○	
450/300 - 305	STB	●	○	○	
455/100 - 305	Z	●	○	○	
<b>308mm</b>					
457/127 - 308	18X5X12 1/8	STB	●	●	○
457/152 - 308	18X6X12 1/8	STB	●	●	●
457/178 - 308	18X7X12 1/8	KS15/6	●	○	○
	STB	●	●	●	
457/203 - 308	18X8X12 1/8	STB	●	●	●
457/229 - 308	18X9X12 1/8	STB	●	●	○
<b>330mm</b>					
533/229 - 330	21X9X13	KS15/8	●	○	○
<b>370mm</b>					
500/85 - 370	Z	●	○	○	
500/320 - 370	STB	●	○	○	
500/360 - 370	STB	●	○	○	
500/420 - 370	STB	●	○	○	
520/100 - 370	STB	●	○	○	
	Z	●	○	○	
525/100 - 370	Z	●	○	○	
525/120 - 370	Z	●	○	○	

Dimension	Wheel type	MH20	MC20	ContiPT18	
<b>381mm</b>					
533/127 - 381	21X5X15	STB	●	○	○
533/152 - 381	21X6X15	STB	○	●	○
533/178 - 381	21X7X15	STB	●	●	●
533/203 - 381	21X8X15	STB	●	●	●
533/229 - 381	21X9X15	STB	●	○	●
<b>406mm</b>					
559/152 - 406	22X6X16	STB	●	○	○
559/203 - 406	22X8X16	STB	●	●	●
559/229 - 406	22X9X16	STB	●	●	●
559/254 - 406	22X10X16	STB	●	●	○
559/305 - 406	22X12X16	STB	●	●	●
559/356 - 406	22X14X16	STB	●	○	○
559/406 - 406	22X16X16	STB	●	○	○
<b>410mm</b>					
500/65 - 410	STB	●	○	○	
	Z	●	○	○	
540/200 - 410	Z	●	○	○	
550/120 - 410	KM8	●	○	○	
	Z	●	○	○	
550/160 - 410	STB	●	○	○	
550/120 - 410	Z	●	○	○	
	STB	●	○	○	
560/100 - 410	Z	●	○	○	
	STB	●	○	○	
590/120 - 410	Z	●	○	○	
610/150 - 410	STB	●	○	○	
	Z	●	○	○	
620/200 - 410	STB	●	○	○	
	Z	●	○	○	
645/250 - 410	STB	●	○	○	
	Z	●	○	○	
645/300 - 410	STB	●	○	○	
<b>480mm</b>					
620/420 - 480	STB	●	○	○	
645/200 - 480	KS15/8	○	●	○	
	STB	●	○	○	
645/250 - 480	STB	●	○	○	
<b>500mm</b>					
760/250 - 500	STB	●	○	○	
<b>559mm</b>					
711/254 - 559	28X10X22	STB	●	○	○
711/305 - 559	28X12X22	STB	●	●	○
711/356 - 559	28X14X22	STB	●	○	○
711/406 - 559	28X16X22	STB	●	○	○
840/356 - 559	STB	●	○	○	
840/406 - 559	STB	●	○	○	
840/500 - 559	STB	●	○	○	
<b>640mm</b>					
750/75 - 640	Z	●	○	○	
<b>670mm</b>					
920/250 - 670	STB	●	○	○	
920/400 - 670	STB	●	○	○	
<b>762mm</b>					
1016/406 - 762	40X16X30	STB	●	○	○



## Pioneering eco-friendly innovations

Continental works on pioneering renewable resources such as Taraxagum, and has already received the European environmental prize “Green Tec Award” for this successful initiative. The tyre manufacturer also meets the European Chemicals ordinance REACH, which specifies the registration, authorisation and restriction of use of chemicals.

Continental Commercial Specialty Tyres (CST) continuously invests in the development of sustainable innovations for economically and ecologically efficient mobility. In addition to reducing fuel and energy consumption, the tyre manufacturer focuses on improving tyre performance in order to achieve an extended lifecycle. Durable tyres consume less energy throughout the entire production process as well as when in use. In addition, Continental CST strives to utilise the most environmentally friendly raw material sources.

Continental CST will continue to work on enhancing the sustainable performance of its tyres so as to make a valuable contribution to the protection of the environment and a cleaner future.



**Continental Tyre Group Ltd**

191 High Street

Yiewsley, West Drayton

UB7 7XW

[www.continental-tyres.co.uk/specialty](http://www.continental-tyres.co.uk/specialty)